

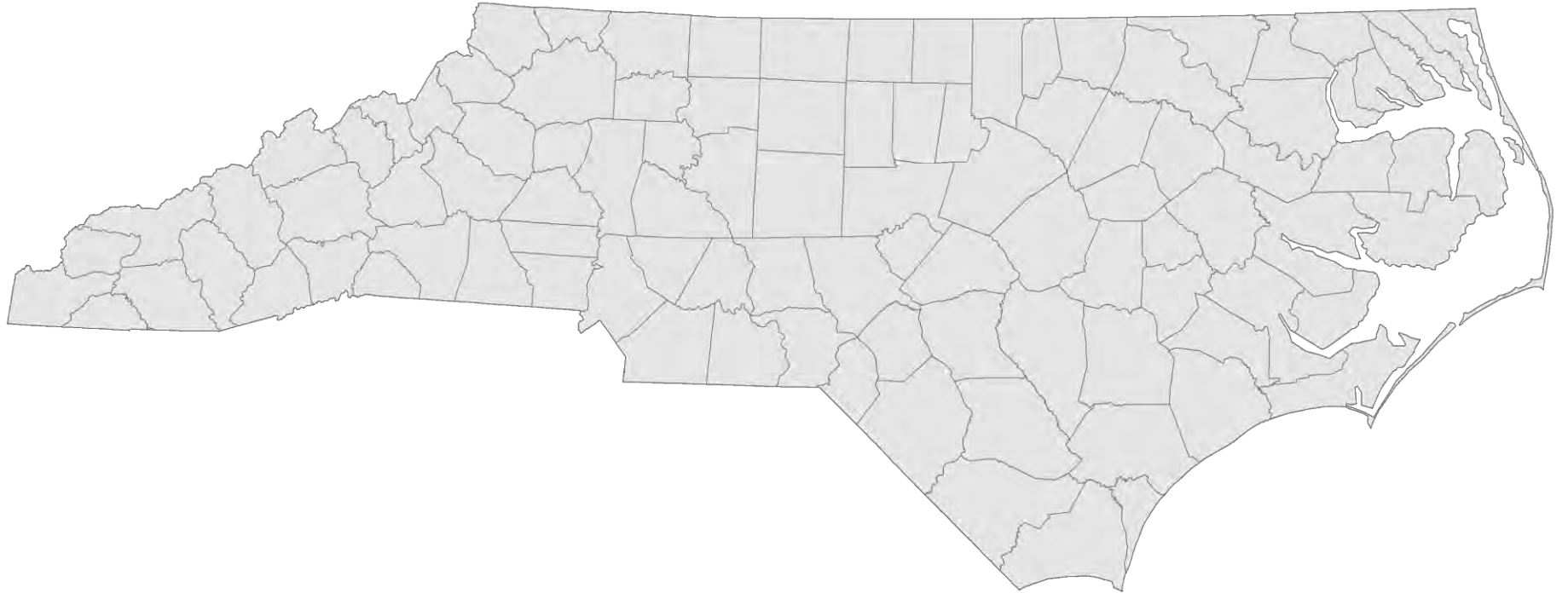
The Coast is Complicated

Demographic Trends & NC's Coast

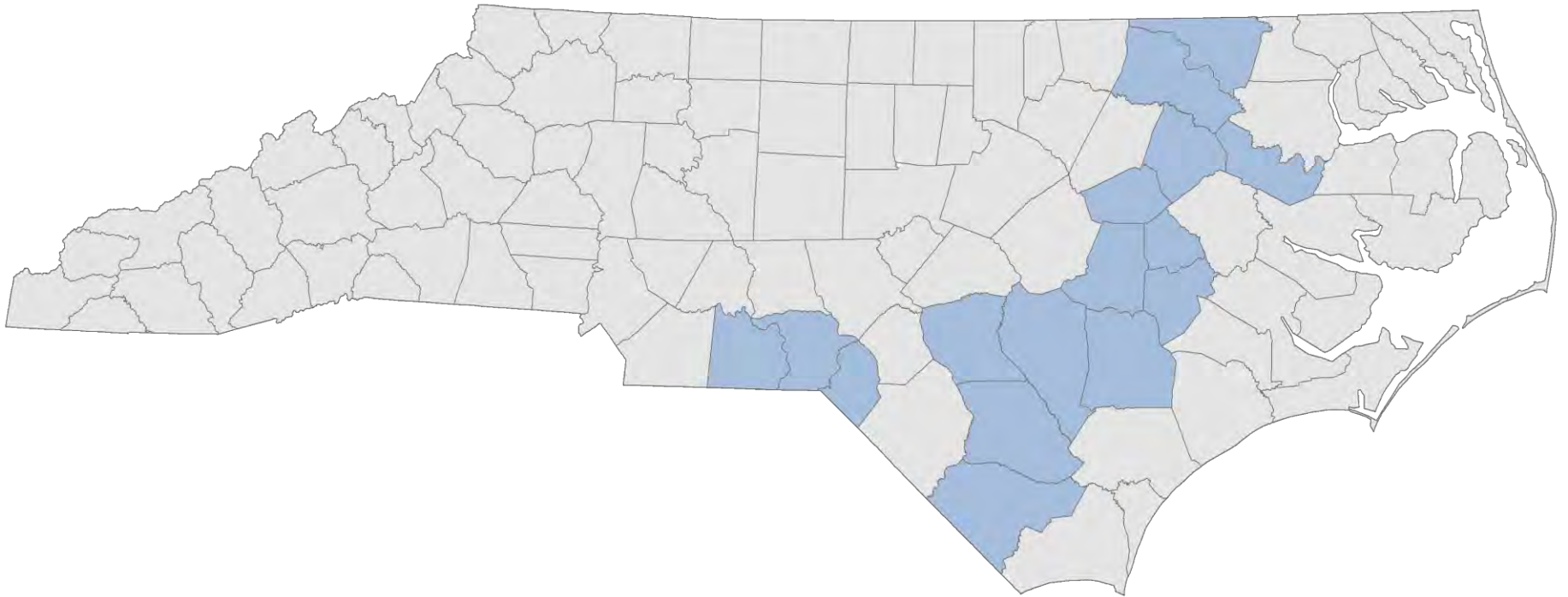
North Carolina Coastal Conference
April 14, 2015

Rebecca Tippett
UNC-Chapel Hill

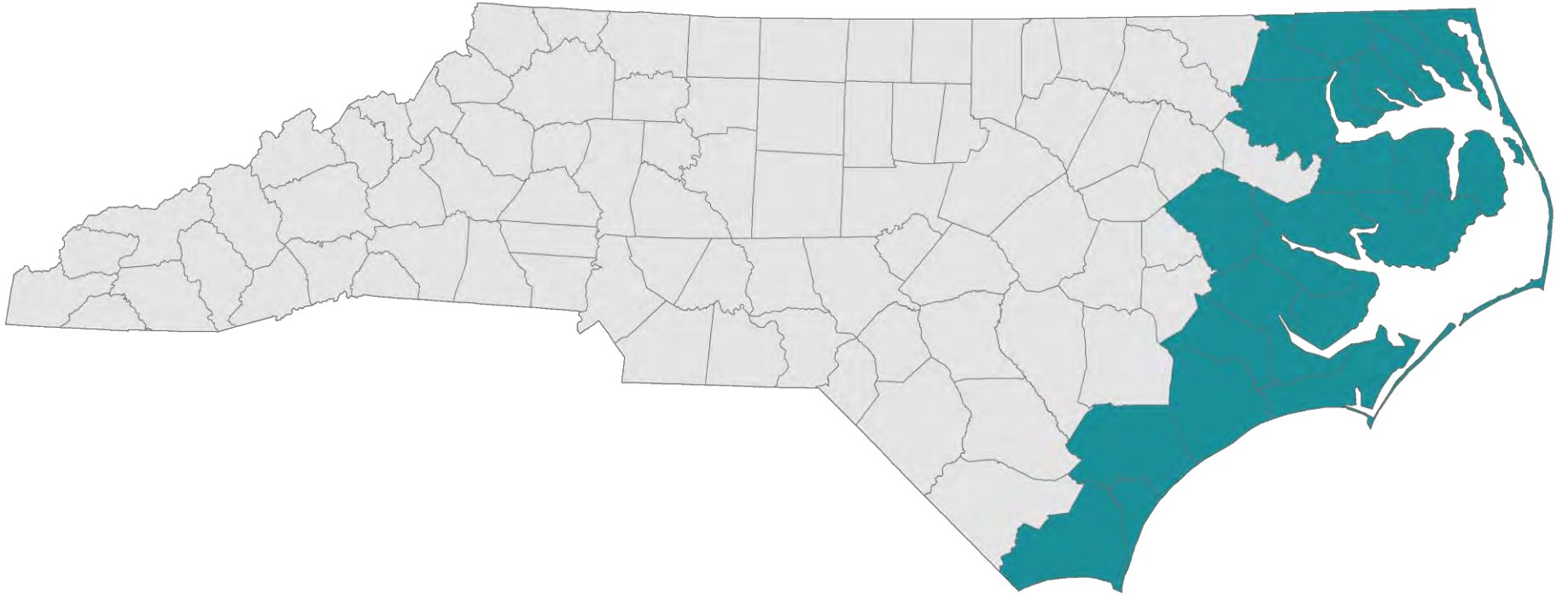
100 NC Counties



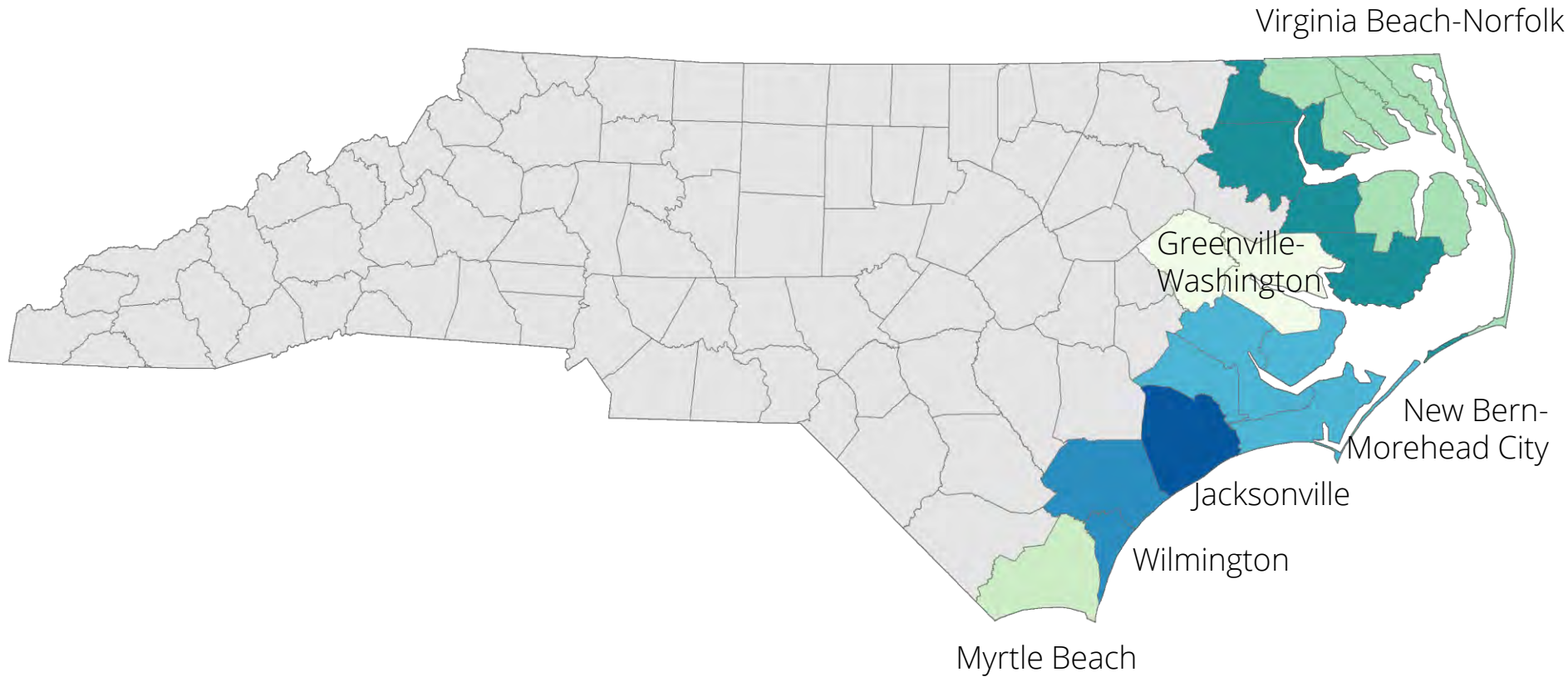
16 Coastal Watershed Counties



22 Coastal Shoreline Counties



6 Metropolitan or Combined Statistical Areas





Coastal Housing Units 1940-2050

1940



Housing Units per Square Mile

- less than 50
- 50-99
- 100-249
- 250-499
- 500-999
- 1,000-1,999
- 2,000 units or more

1950



Housing Units per Square Mile

- less than 50
- 50-99
- 100-249
- 250-499
- 500-999
- 1,000-1,999
- 2,000 units or more

1960



Housing Units per Square Mile

- less than 50
- 50-99
- 100-249
- 250-499
- 500-999
- 1,000-1,999
- 2,000 units or more

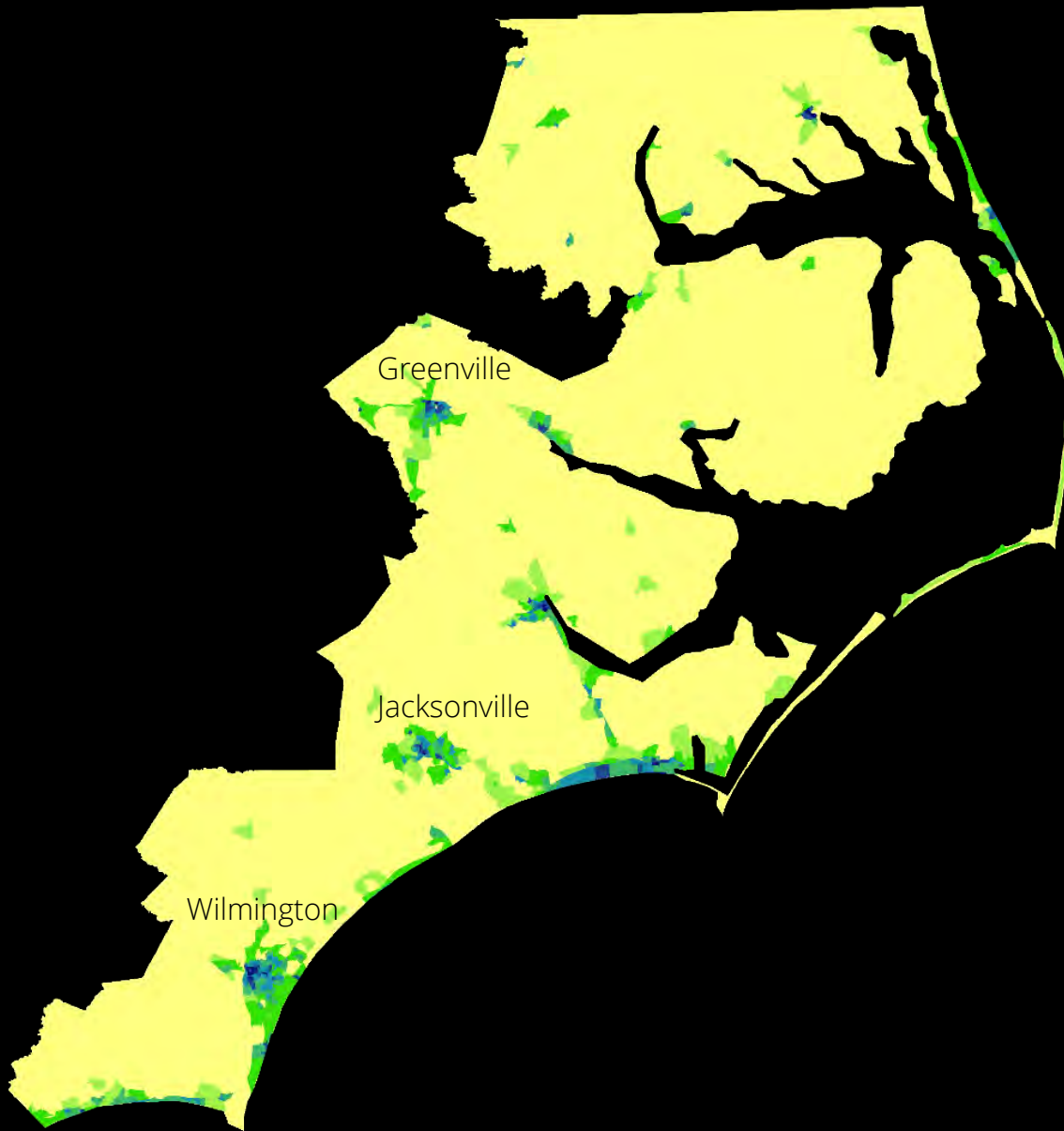
1970



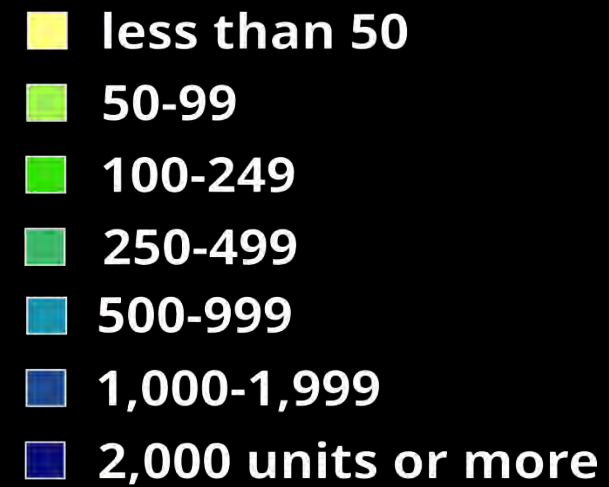
Housing Units per Square Mile

- less than 50
- 50-99
- 100-249
- 250-499
- 500-999
- 1,000-1,999
- 2,000 units or more

1980



Housing Units per Square Mile



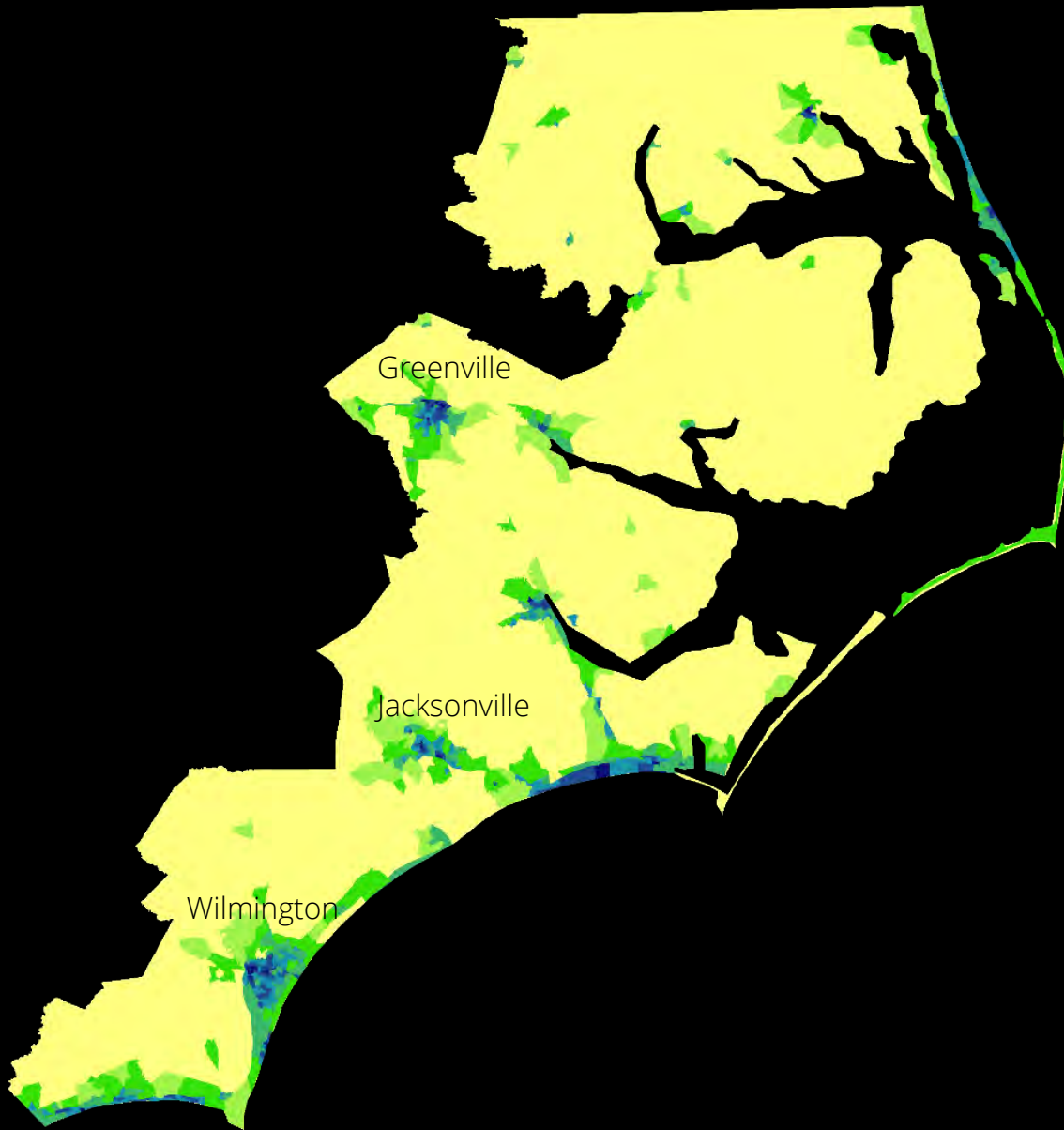
1990



Housing Units per Square Mile

- less than 50
- 50-99
- 100-249
- 250-499
- 500-999
- 1,000-1,999
- 2,000 units or more

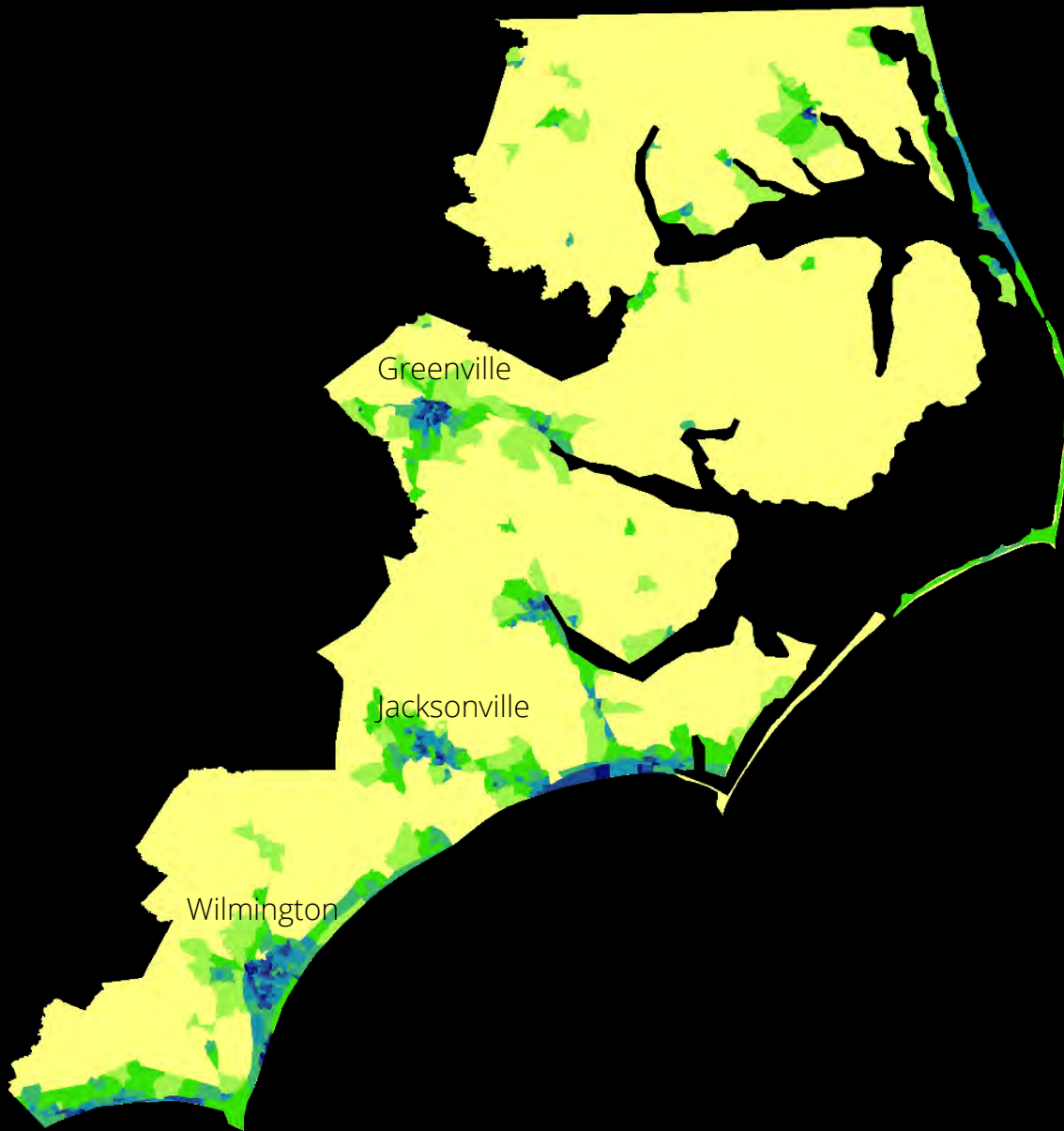
2000



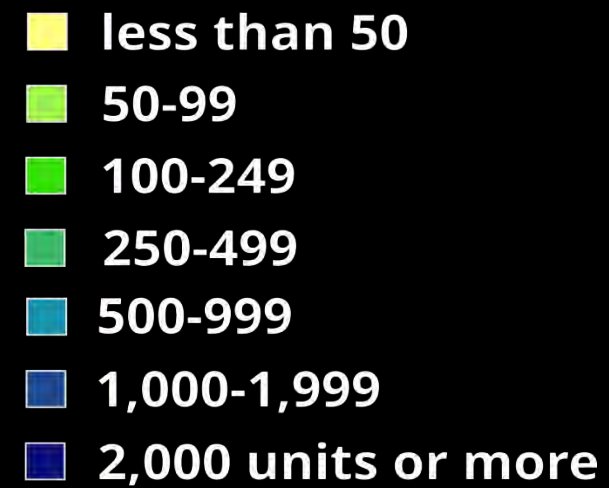
Housing Units per Square Mile

- less than 50
- 50-99
- 100-249
- 250-499
- 500-999
- 1,000-1,999
- 2,000 units or more

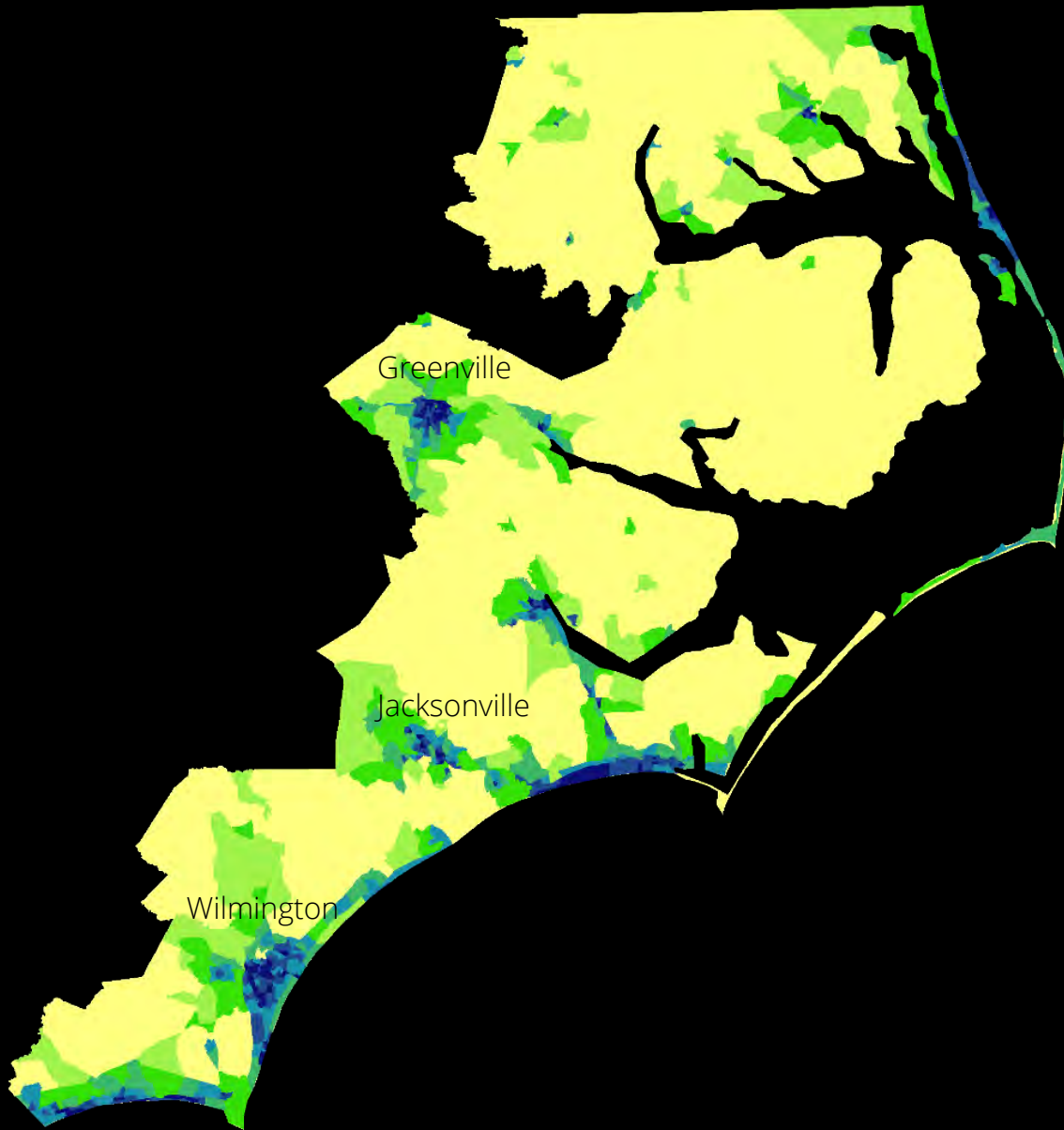
2010



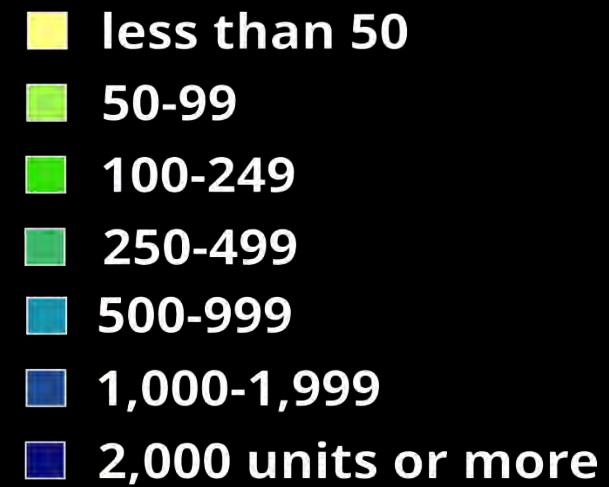
Housing Units per Square Mile



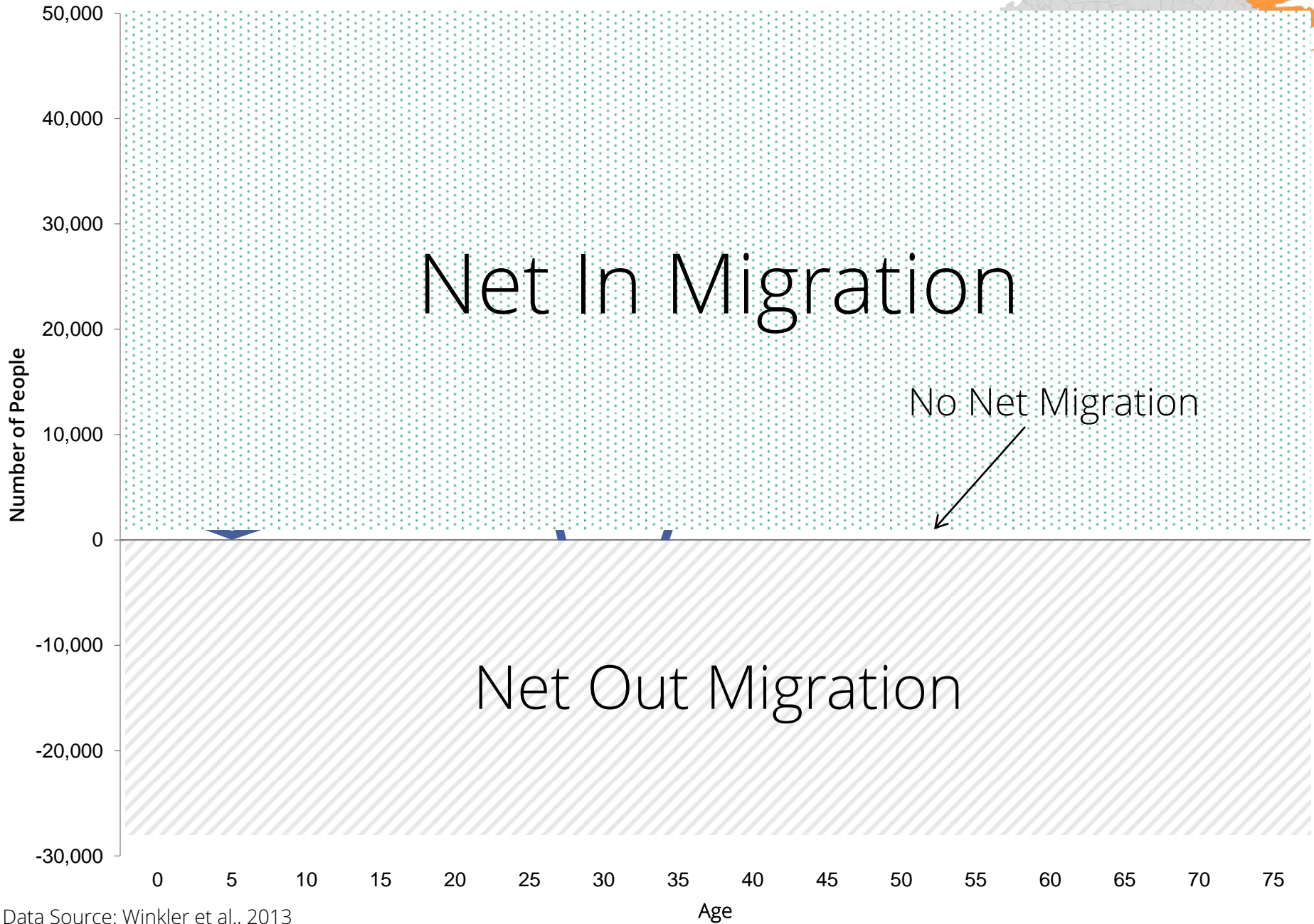
2050



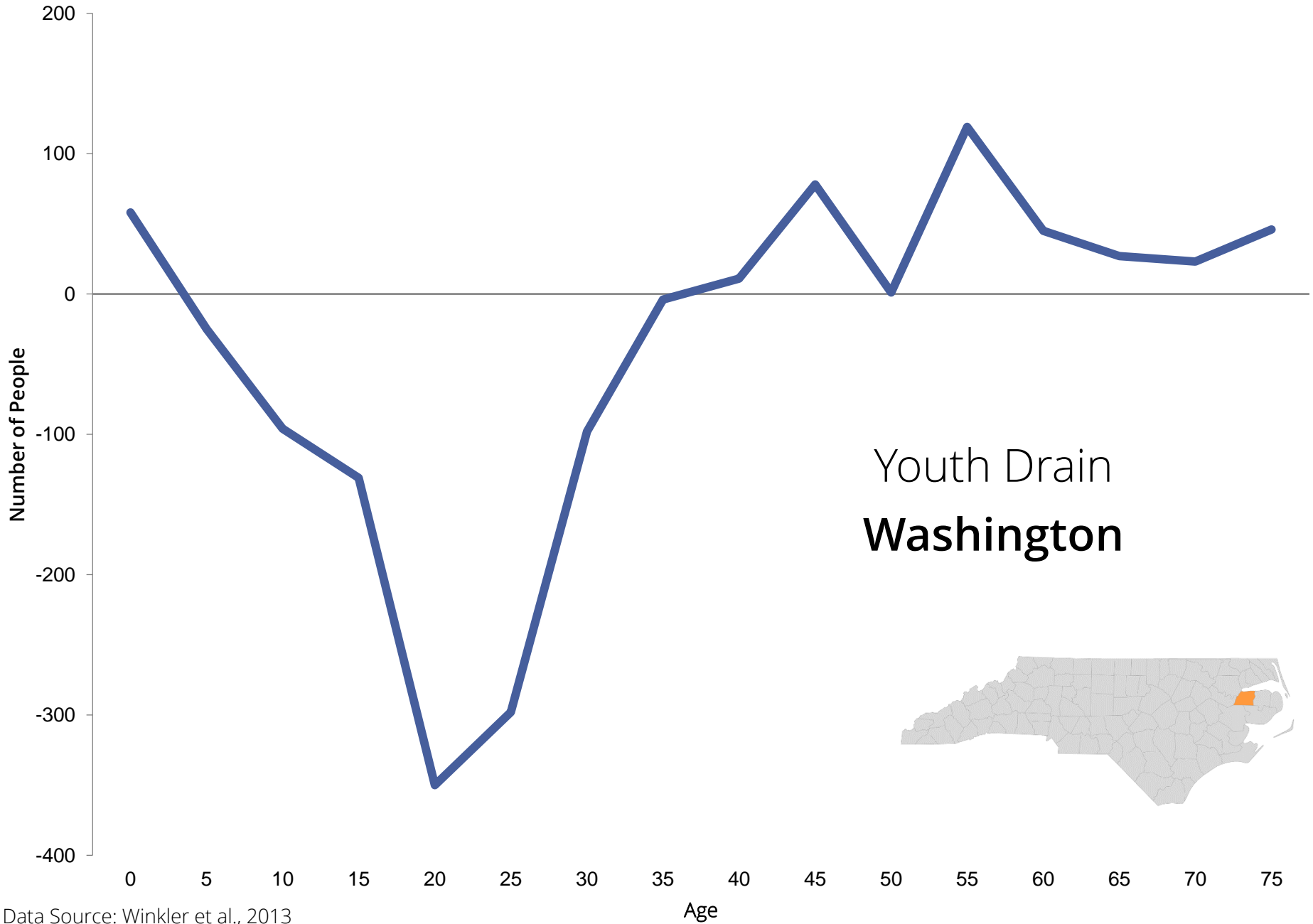
Housing Units per Square Mile



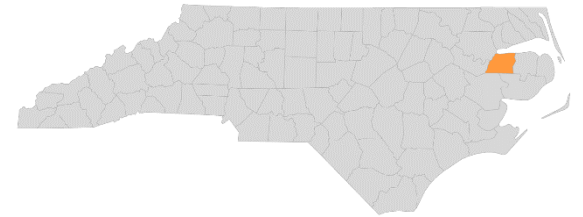
Net Migration by Age, 2000-2010



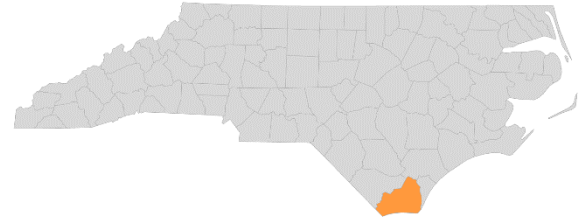
Net Migration by Age, 2000-2010



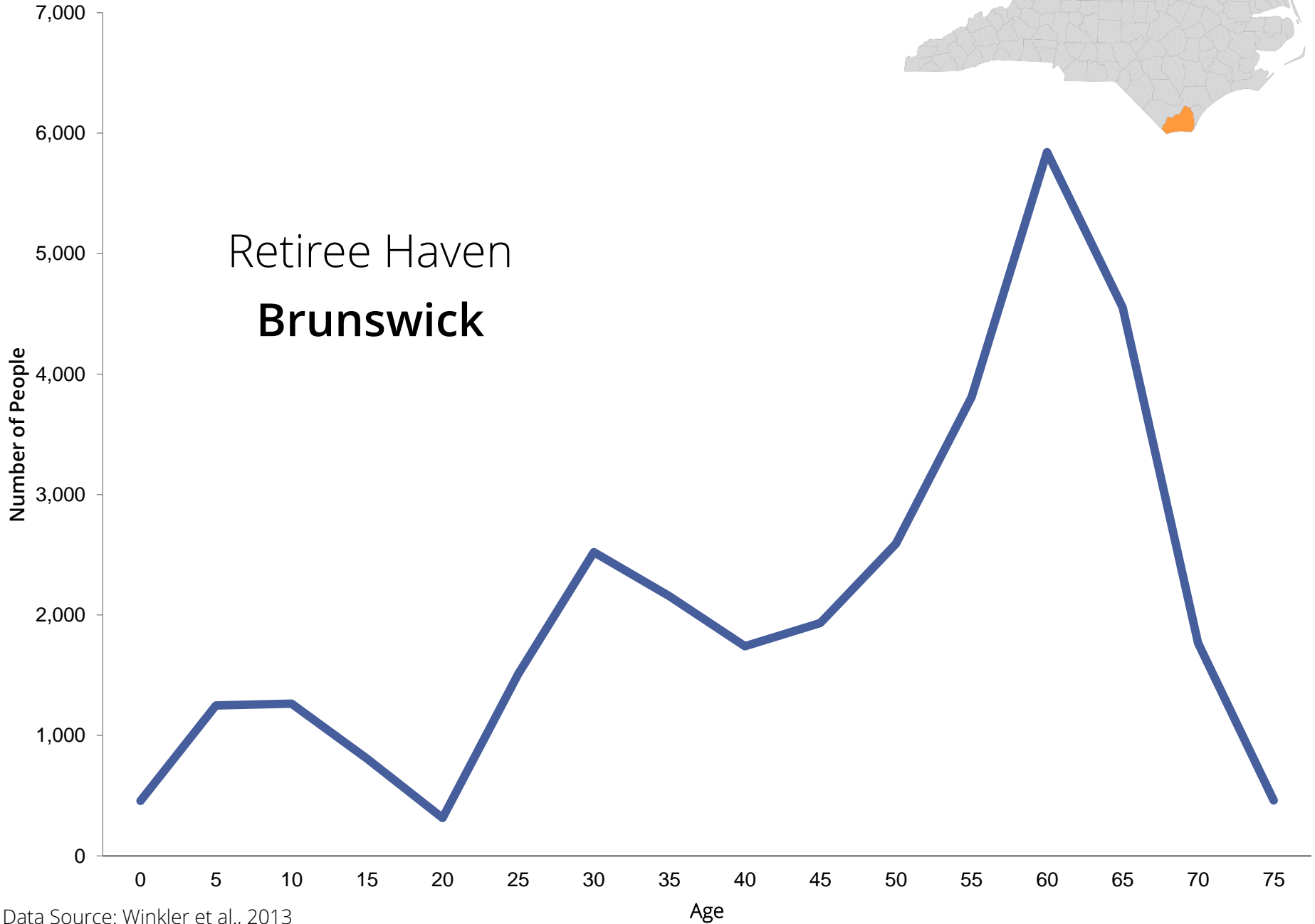
Youth Drain
Washington



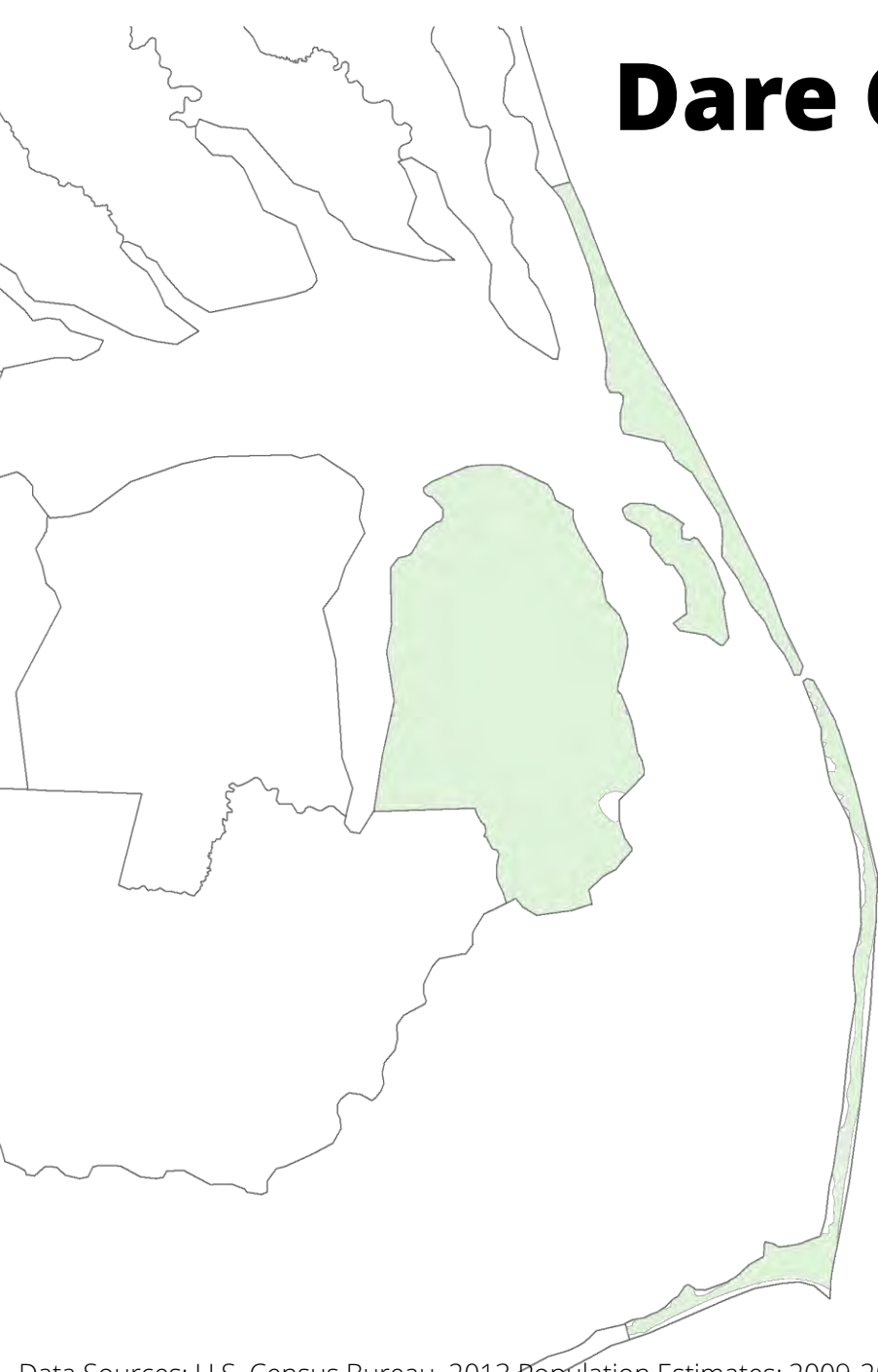
Net Migration by Age, 2000-2010



Retiree Haven
Brunswick



Dare County





Dare County has as many housing units as people

34,919

Permanent
Residents

33,783

Housing Units



Dare County has as many housing units as people

34,919

Permanent
Residents

33,783

Housing Units

50%

for seasonal use

Tourism impacts on Dare are significant

\$953 million
in visitor expenditures





Tourism impacts on Dare are significant

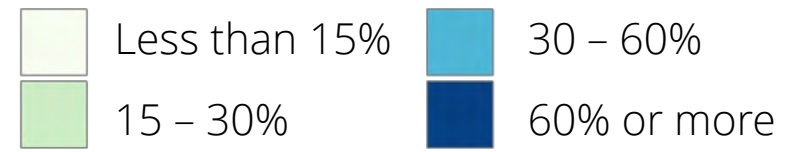
\$953 million
in visitor expenditures

+225,000
in population
during peak months

Seasonal units concentrated in Northern Beaches



Seasonal Units as % of Housing Units



Seasonal units concentrated in Northern Beaches

80%
of seasonal units

10%
of Dare County
land area



Seasonal Units as % of Housing Units

- Less than 15%
- 15 - 30%
- 30 - 60%
- 60% or more

Data Source: 2010 Census



Thank you!

<http://demography.cpc.unc.edu>
[@ncdemography](#)

Rebecca Tippett

(919) 962-6151

rebecca.tippett@unc.edu



UNC

CAROLINA POPULATION CENTER
CAROLINA DEMOGRAPHY