



NC Aquaculture Conference  
2016

*Department of Environmental Quality  
Division Marine Fisheries  
Habitat and Enhancement*

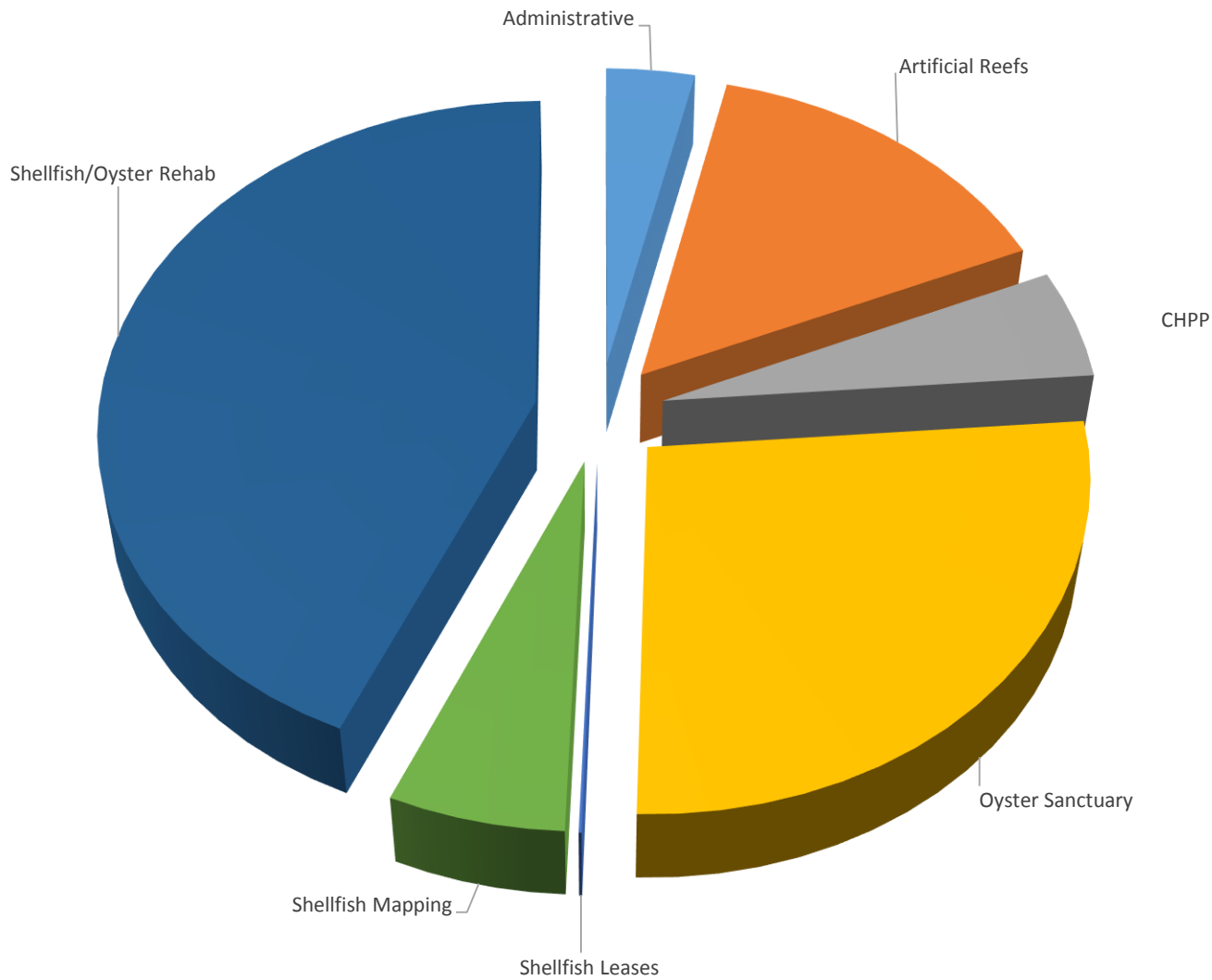


# Habitat and Enhancement Section

- Enhancement and Rehabilitation
  - Oyster cultch planting
  - Reef development
  - Oyster sanctuary development
  - Vessel and equipment operations
- Habitat Assessment
  - Coastal Habitat Protection Plan
  - Shellfish mapping
  - Shellfish lease program
  - Shellfish disease monitoring
  - Permitting



# Habitat and Enhancement FY 2015/2016 Budget Allocations



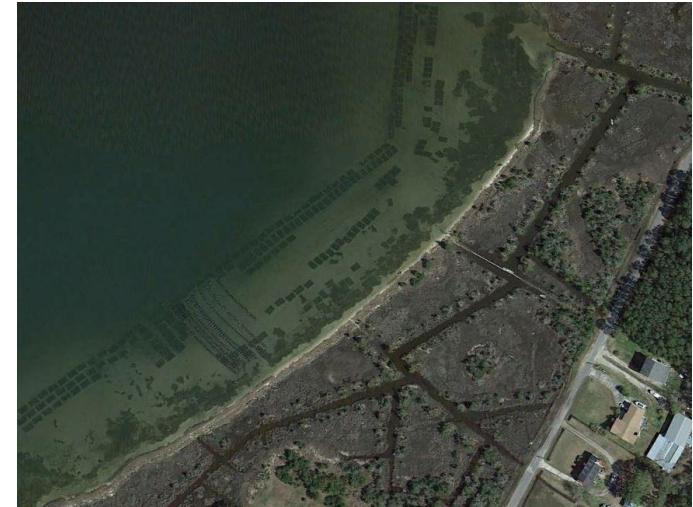


# 2015 Legislative Reports and Changes Impacting Oysters, Habitat and Aquaculture

- Session Law 2015-241
- Reports:
  - Core Sound Leasing
  - Senator Jean Preston Marine Oyster Sanctuary Program
  - Simplify Oyster Restoration Project Permitting (DMF and DCM)
  - Division of Marine Fisheries Recommendations for Shellfish Aquaculture
  - Oyster Research Reporting (DMF and UNCW)
- Legislative Changes:
  - Use of Oyster Shells Prohibited in Commercial Landscaping
  - Shellfish Cultivation Leasing Reform
  - SCFL Exemption for Employees of Leaseholder



- Core Sound Leasing
  - Moratorium(s) 1993-Present
  - Water Quality
  - Work with Downeast Community/Growers
  - Report Due April 1
- Senator Jean Preston Marine Oyster Sanctuary
  - Comprehensive covering many areas
  - Sanctuary/cultch connectivity
  - Enhancement
  - Economic relief
  - Outreach
  - Monitoring
  - Funding requests
  - Draft submitted to DEQ



- Simplify Oyster Restoration Permitting
  - Intent for non-profits
  - DCM and DMF multiple meetings
  - Meeting with stakeholders, COE
  - Due May 1
- DMF Recommendations for Shellfish Aquaculture
  - Policy and Statutory changes needed
  - Declining oyster populations
  - Non-native oyster options
  - Oyster disease
  - Aquaculture to improve stock and populations
  - Expand use of private hatcheries
  - Use of cultch planting
  - Leveraging
  - Meeting with Oyster Committee, Internal and Sea Grant
  - Draft submitted to DEQ





# Legislative Changes

- Leasing Reform

- Survey requirement changed to “information sufficient”
- Lease term increased from 5-10 years
- Bottom lease allowance for devices or equipment related to cultivation or harvest up to 18 inches off bottom

- Shellfish License Exemption

- Employees of SCFL holder
- Within lease boundaries
- Mechanical Harvest only
- *Needs technical change for intended purpose*

