

OUR PURPOSE

*Feeding  
the Future*

Contact us

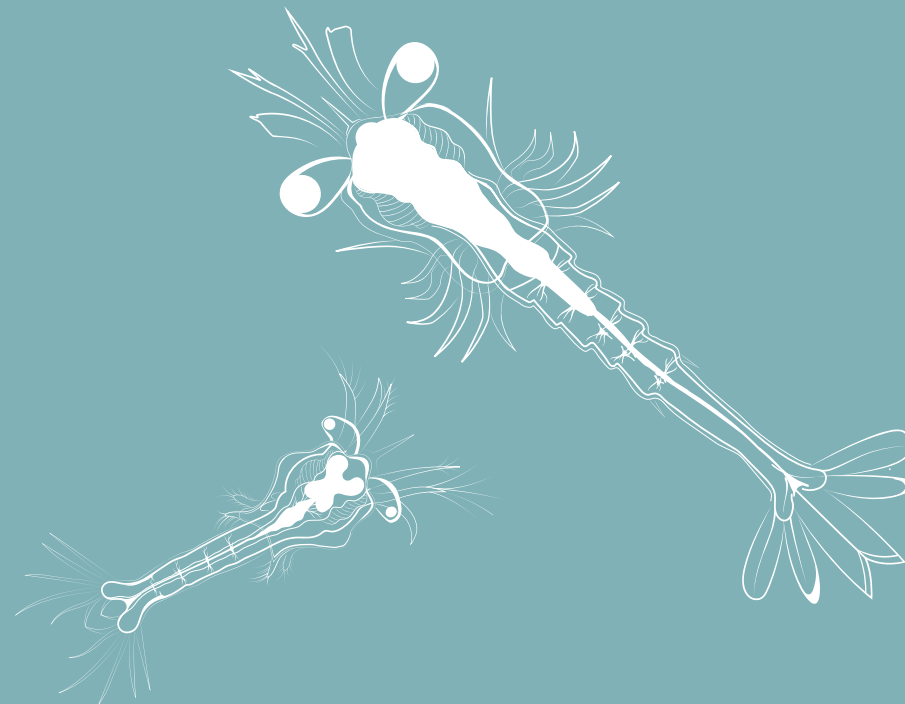
Skretting North America  
15 Saunders Way, Suite 500-E  
Westbrook, Maine 04092 USA

# Life Start Marine Hatchery Diet

O: +1 207 591 7077  
F: +1 207 591-7078  
E: [feedmyfish@skretting.com](mailto:feedmyfish@skretting.com)

Our certificates

We are ISO 9001:2015 certified



For more information and to see our Terms and Conditions of sale,  
please visit our website [www.skretting.us](http://www.skretting.us)



DIET		FEED SPECIFICATIONS				PRODUCT FEATURES						
		Size				Packaging (bags)						
MARINE FISH	Broodstock		9mm	13mm	17mm	22mm	25kg					
		Vitalis Prima	54 18	54 18	54 18	54 18	Vitalis PRIMA should be offered to the brood fish from the on-set of vitellogenesis and should be fed until 1 month after spawning. This allows optimal development, sustenance and recovery through the whole spawning period.					
		Vitalis Repro	52 18	52 18	52 18	52 18	Vitalis REPRO should be offered outside the spawning window to maintain optimal condition of the spawning fish.					
	Live feed	ORI N3	3,5 17				2kg					
		ORI One	56 17				1,5kg					
		ORI Green	43 30				1 kg					
	Larval diets		75 (50-100µm)	150 (100-200µm)	300 (200-500µm)	500 (400-700µm)	1kg	2,5kg	2,5kg	2,5kg		
		Gemma Micro	59 14	59 14	59 14	59 14	GEMMA Micro is formulated with a high percentage of soluble hydrolysed marine proteins, HUFAs, phospholipids and algae resulting in each particle exhibiting a striking green colour. GEMMA Micro is a highly stable feed exhibiting excellent physical characteristics.					
			0 (10-110µm)	0,1 (100-250µm)	0,2 (250-400µm)	0,3 (300-550µm)	0,5 (500-800µm)	0,5kg	1kg	2,5kg	10kg	10kg
		Gemma Neo	60 11	60 11	60 11	60 11	60 11	GEMMA Neo is the first diet to be formulated with cellular encapsulation technology. The diet is produced using a complex low temperature process which focuses on optimal freshness, uniform size distribution and water stability.				
Gemma Wean*			62 14	62 14	62 14	62 14		GEMMA Wean has been developed to co-feed and wean marine larvae during the larval rearing phases. It is the optimal diet to follow on from rotifers and co-feed with minimal Artemia. * <i>Gemma Wean will be replace by Gemma Neo</i>				
Nursery diets		0,8mm	1,0mm	1,2mm	1,5mm	1,8mm	16kg					
	Gemma Silk	57 15	57 15	57 15	57 15	57 15	GEMMA Silk has been developed for marine fish juveniles requiring a slow sinking diet for pre-growing and is the ideal follow on after GEMMA Micro. GEMMA Silk has been enhanced with extra attractants to give juveniles the best start by assuring fast and efficient growth and low feed conversion under pre-growing conditions.					
SHRIMP	Broodstock		2,5mm				10kg					
		Vitalis 2,5	59 11				Vitalis 2.5 has been developed to partially replace the use of moist feeds while at the same time providing the correct level of essential nutrients in a stable form.					
	Hatchery diets		#0 (10-110µm)	#1 (100-250µm)	#2 (250-400µm)	#3 (300-550µm)	#4 (500-800µm)	0,5kg	1kg	2,5kg	2,5kg/10kg	10kg
		Elevia	60 11	60 11	60 11	60 11	60 11	Elevia is an innovative patented feeding program from Skretting, engineered to offer superior nutrition and water quality in shrimp hatcheries & Nurseries. Elevia replaces 100% the need for dark flakes and offers the possibility to diminish artemia use.				
	PL	62 14	62 14	62 14	62 14	62 14	PL is a highly digestible diet formulated with a blend of specific marine proteins, HUFAs, phospholipids, marine algae, vitamins and minerals. Each micro particle is carefully designed to offer a stable and nutritious platform while the low temperature production process ensures a soft, fresh and highly attractive particle.					