

SCREENING: HIGH AND LOW

FOR SUNNY, MOIST AREAS

SUN: ☀️ ☂️
 WATER: 💧
 SEASONAL COLOR: APR-OCT



Mary Keim
Sweetbay magnolia



Mary Keim
Inkberry



Jeff Lewis
Purple coneflower



J.C. Raulston Arboretum
Smooth beardtongue

DESCRIPTION

The semi-evergreen sweetbay magnolia and evergreen inkberry used in this design help increase privacy near the home or block unwanted views for most of the year. The combination of taller and shorter plants provides a wide range of habitat for wildlife in a small footprint, while the perennials offer seasonal color as well as nectar for insects. Suggested spacing allows for branch overlap when plants are mature.

Sweetbay magnolia has a moderate growth rate. Inkberry grows slowly.

ALTERNATIVE

Tree substitutes: fast-growing, evergreen eastern red cedar (*Juniperus virginiana*); moderate-growing, salt-tolerant, evergreen yaupon holly (*Ilex vomitoria*) or American holly (*Ilex opaca*). A taller shrub such as wax myrtle (*Morella cerifera*) could also be used.

Shrub substitutes: dwarf palmetto (*Sabal minor*) or the eco-regional anise shrub (*Illicium parviflorum*).

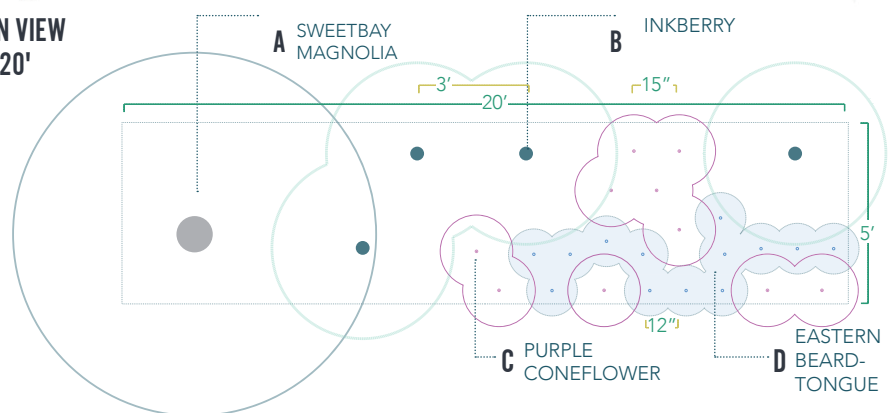
Perennial substitutes: For coneflower, try butterfly weed (*Asclepias tuberosa*) or spring-blooming sand coreopsis (*Coreopsis lanceolata*). In place of beardtongue, try blazing star (*Liatis sp.*).

MAINTENANCE

If needed, prune inkberry in late winter to remove dead wood or to rejuvenate.



PLAN VIEW
5' x 20'



PLANT SELECTION

KEY	QTY	COMMON NAME	BOTANICAL NAME	PLANT TYPE	SPACING	SEASONAL COLOR														
						J	F	M	A	M	J	J	A	S	O	N	D			
A	1	Sweetbay magnolia	Magnolia virginiana	TREE	10' O.C.															
B	4	Inkberry	Ilex glabra	SHRUB	3' O.C.															
C	10	Purple coneflower	Echinacea purpurea	PERENNIAL	15" O.C.															
D	13	Eastern smooth beardtongue	Penstemon laevigatus	PERENNIAL	12" O.C.															