

SCREENING WITH TREES

FOR SUNNY, MOIST AREAS

SUN: ☀️
 SOIL MOISTURE: 💧
 SEASONAL COLOR: MAY-NOV



DESCRIPTION

This semi-evergreen tree border can increase privacy or block an unsightly view. Sweetbay magnolia trees have a moderate growth rate. While trees are young, the flowers will get plenty of sun to bloom, attracting pollinators and other beneficial insects. Birds will use the trees for cover and forage on flower seeds. Magnolias also serve as a host plant for the eastern tiger swallowtail butterfly.

Be aware that tree branches will extend beyond the 5-foot by 20-foot planting area. Suggested spacing allows for branch overlap that provides screening. Avoid sites with overhead power lines for this plan, or use much shorter trees if lines are present.

ALTERNATIVE

Use a variety of trees and adjust for differences in plant spread.

Tree substitutes: fast-growing, evergreen red cedar (*Juniperus virginiana*); moderate-growing, evergreen yaupon holly (*Ilex vomitoria*) or American holly (*Ilex opaca*).

Perennial substitutes: shade-tolerant river oats (*Chasmanthium latifolium*); dotted horsemint or spotted beebalm (*Monarda punctata*); sand coreopsis (*Coreopsis lanceolata*).

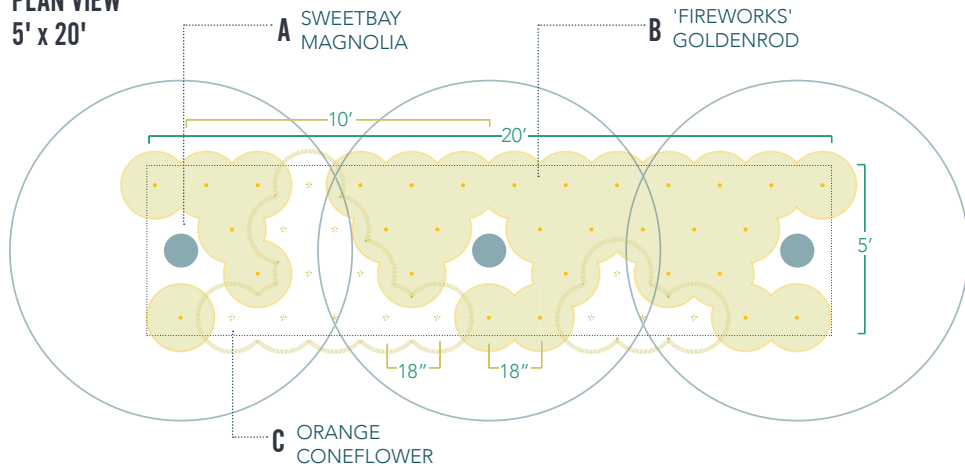
MAINTENANCE

When trees mature, their shade can cause perennial flowers to decrease in number. If this happens, you can apply a hardwood mulch to conserve water and prevent weeds in the area or install shade-tolerant plants. If adding plants, consider using plugs or seeds to avoid damaging tree roots.



PLAN VIEW

5' x 20'



PLANT SELECTION

KEY	QTY	COMMON NAME	BOTANICAL NAME	PLANT TYPE	SPACING	SEASONAL COLOR																
						J	F	M	A	M	J	J	A	S	O	N	D					
A	3	Sweetbay magnolia	Magnolia virginiana	TREE	10' O.C.																	
B	31	'Fireworks' goldenrod	Solidago rugosa 'Fireworks'	PERENNIAL	18" O.C.																	
C	14	Orange coneflower	Rudbeckia fulgida	PERENNIAL	18" O.C.																	