

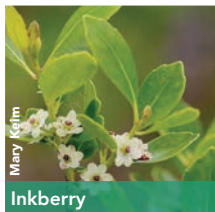
LOW EVERGREEN BORDER

FOR DRY TO MOIST AREAS WITH SUN TO PART-SHADE

SUN: ☀️ ☁️

SOIL MOISTURE: 💧 – 💧💧

SEASONAL COLOR: SEPT-FEB



DESCRIPTION

This design affords an open view and is fitting as a border along a driveway, front sidewalk or walkway to the front door. Dwarf yaupon holly's compact habit lends a refined and formal feel, while the pink feathery texture of muhly grass adds whimsy. Inkberry and dwarf yaupon have slow growth rates.

ALTERNATIVE

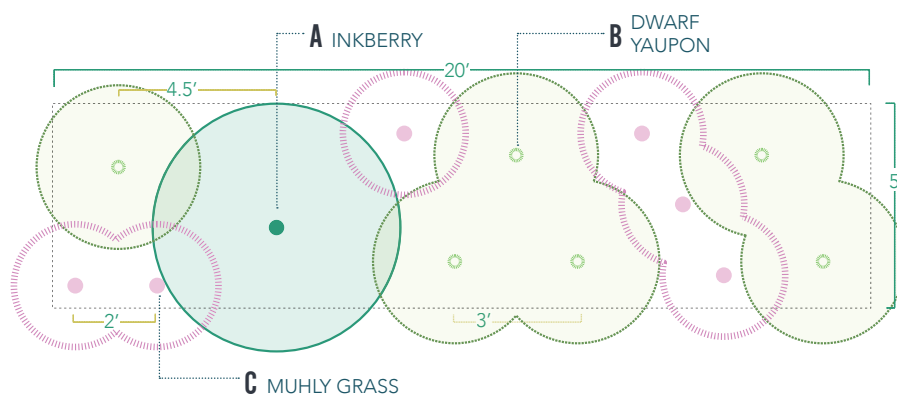
Grass substitutes: switchgrass (*Panicum virgatum*), Elliott's lovegrass (*Eragrostis elliottii*) or little bluestem (*Schizachyrium scoparium*).

MAINTENANCE

To achieve the most ecologically beneficial garden, wait until late winter or early spring to cut back grasses. Leave an 8-to-12-inch crown on muhly grass.

PLAN VIEW

5' x 20'



PLANT SELECTION

KEY	QTY	COMMON NAME	BOTANICAL NAME	PLANT TYPE	SPACING	SEASONAL COLOR																	
						J	F	M	A	M	J	J	A	S	O	N	D						
A	1	Inkberry	<i>Ilex glabra</i>	SHRUB	4.5' O.C. TO YAUPON																		
B	6	Dwarf yaupon	<i>Ilex vomitoria</i> 'Nana'	SHRUB	3' O.C.																		
C	6	Muhly grass	<i>Muhlenbergia capillaris</i>	GRASS	2' O.C.																		